

# ISUZU

# ELF



## SAFETY PLUS

**SRS**  
AIRBAG

**ASR**  
ANTI-SLIP REGULATOR

**ABS**  
ANTI-LOCK BRAKING SYSTEM

**EBD**  
ELECTRONIC BRAKE FORCE DISTRIBUTION

 **IMMOBILIZER**  
\*AVAILABLE ON NPR CREW MODEL\*

4 WHEELER

GVW 4,100kg

**NLR**  
**CREW**

6 WHEELER

GVW 5,200kg

**NMR**  
**CREW**

GVW 7,500kg

**NPR**  
**CREW**



**EURO 4**



**FREE**  
**SERVICE CAMPAIGN**  
 **ISUZU**

Product image for illustration purposes only. Actual product may vary.

## SPECIFICATIONS

### NLR CREW

### NMR CREW

### NPR CREW


MODEL CODE		NLR77UFEW		NMR77UFHW		NPR75UKHW	
Drive Train				4 x 2			
Type		4-Wheeler		6-Wheeler			
ENGINE							
Model		4JH1-TC				4HK1-TCN	
Type		4-Cylinder Inline, 4 Cycle, Water-Cooled					
		OHV, Turbo with Intercooler				OHC, VGS Turbo with Intercooler	
Displacement	cc	2,999				5,193	
Maximum Output (Gross)	kW (PS) @ rpm	77 (105) @ 3,200				114 (155) @ 2,600	
Maximum Torque	Nm (kgfm) @ rpm	230 @ 1,400-3,400				419 @ 1,600-2,600	
Emission Level		Euro 4					
Fuel System		Commonrail Direct Injection					
TRANSMISSION							
Model / No. of Speed		MSB5S				MY-6S	
Gear Ratio		Manual 5-Speed				Manual 6-Speed	
	1st	5.016				5.979	
	2nd	2.672				3.434	
	3rd	1.585				1.862	
	4th	1.000				1.297	
	5th	0.770				1.000	
	6th	-				0.759	
	Reverse	4.783				5.701	
	Final	5.857				5.125	
WEIGHT & CAPACITIES							
Gross Vehicle Weight	kg	4,100		5,200		7,500	
Curb Weight	kg	2,100		2,170		2,880	
Front	kg	1,420		1,425		1,920	
Rear	kg	680		745		960	
Fuel Tank Capacity	l	63		63		100	
AXLE							
Front	Type	Reverse Elliot, I-Beam					
Front Axle Capacity (Design)	kg	2,900				3,100	
Rear	Type	Banjo, Full Floating					
Rear Axle Capacity (Design)	kg	3,600		5,000		6,600	
SUSPENSION SYSTEM							
Suspension	Front	Semi Elliptical Alloy Steel Leaf Spring with Double Acting Telescopic Shock Absorber, Stabiliser Bar		Semi Elliptical Alloy Steel Leaf Spring with Double Acting Telescopic Shock Absorber			
	Rear	Semi Elliptical Alloy Steel Leaf Spring with Double Acting Telescopic Shock Absorber					
TYRES & WHEELS							
Tyres		205/85R16		215/75R17.5			
Wheels		16 x 5.5J-85		16 x 5.5-116.5		17.5 x 6.00-127	
BRAKES							
Service	Type	Hydraulic System with Auto Adjusting Front and Rear Drum Brakes					
		Dual Circuit, Vacuum Assistance and Anti-Lock Brake System (ABS) with Electronic Brake Force Distribution (EBD)					
Parking Brake Type		Transmission Mounted, Mechanical Operated Internal Expanding					
Auxiliary		Exhaust Brake					
STEERING							
Steering System		Power Assist, Recirculating Ball Type					
Min. Turning Radius	m	6.1				7.1	
ELECTRICAL							
Battery		95D31L x 1				80D26L x 2	
Alternator		12V-60A				24V-90A	
OTHER SAFETY							
Safety		Supplemental Restraint System (SRS) with Pre-Tensioner Seatbelt					
		Anti-Slip Regulator (ASR) with On/Off Function					
Security		Central Locking with Remote Keyless Entry				Central Locking with Remote Keyless Entry & Immobiliser	
DIMENSION							
Overall Length	mm	5,250		6,635			
Overall Width	mm	1,815		2,125			
Overall Height	mm	2,172		2,290		2,275	
Wheelbase	mm	2,750		3,815			
Front Overhang	mm			1,110			
Rear Overhang	mm	1,390		1,710			
Front Tread	mm	1,475		1,680			
Rear Tread	mm	1,395		1,425		1,650	
Cab to Axle Center	mm	1,781		1,186		2,251	

**ISUZU**

**ISUZU MALAYSIA SDN BHD** 200401026438 (664846-H)

501D, LEVEL 5, TOWER D, UPTOWN 5, NO.5, JALAN SS21/39,  
DAMANSARA UPTOWN, 47400 PETALING JAYA, SELANGOR DARUL EHSAN.  
GENERAL LINE: 03-7723 9777 FAX: 03-7723 9779  
HOTLINE: 1-300-88-1133 www.isuzu.net.my

 IsuzuTrucksMalaysia

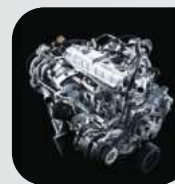
 IsuzuTrucksMalaysia

 www.isuzu.net.my

**ISUZU SERVICE CENTRE SDN BHD** 201601034731 (1205672-X)

LOT 730, JALAN SG. RASAU, SECTION 16,  
40200 SHAH ALAM, SELANGOR DARUL EHSAN.  
PHONE: 03-5513 0518  
FAX: 03-5512 7550

## TESTED AND PROVEN POWERTRAIN



### NLR CREW / NMR CREW

#### 4JH1-TC

Displacement: 2,999cc

Max. Output (Gross): 77kW (105ps) @ 3,200rpm

Max. Torque: 230Nm @ 1,400 - 3,400rpm

**105PS**  
Max Power

**230Nm**  
Flat Torque



### NPR CREW

#### 4HK1-TCN

Displacement: 5,193cc

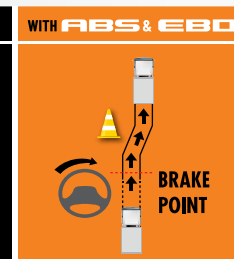
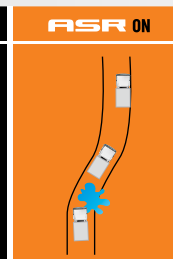
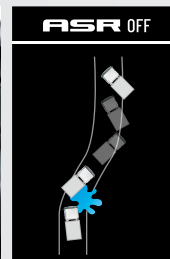
Max. Output (Gross): 114kW (155ps) @ 2,600rpm

Max. Torque: 419Nm @ 1,600 - 2,600rpm

**155PS**  
Max Power

**419Nm**  
Flat Torque

## CLASS-LEADING SAFETY AND LONG TERM COST SAVINGS



ASR traction control helps prevent wheelspins and improves vehicle stability when driving on slippery roads.

EBD is a function that uses the ABS to distribute braking force between the front and rear wheels to compensate for changes in the load conditions or any shift of load due to acceleration/deceleration, thus preventing premature locking of the rear wheels.



\*SRS airbag system and seat belt with pretensioner are activated in the event of a frontal collision, mitigating impact to the head and chest.

\*Applicable for driver only.



Brand New Feature - USB Port



LED Headlight to provide better visibility

Dealer's information

**ISUZU**  
GENUINE PARTS

**ISUZU**  
BEST VALUE PARTS