

ISUZU

ELF



SAFETY PLUS

SRS
AIRBAG

ASR
ANTI-SLIP REGULATOR

ABS
ANTI-LOCK BRAKING SYSTEM

EBD
ELECTRONIC BRAKE FORCE DISTRIBUTION

 **IMMOBILIZER**

6 WHEELER

GVW 7,500kg

GVW 8,500kg

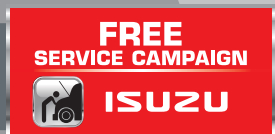
NPR
PRO

NPR
155

NQR
155



EURO 4



Product image for illustration purposes only. Actual product may vary.

SPECIFICATIONS

NPR PRO

NPR155

NQR155

| MODEL CODE | | NPR85UKL | | NPR75UHL | | NPR75UKH | | NQR75UKN | |
|------------------------------|--|----------------------------------|--|--|--|---|--|----------|--|
| Drive Train | | 4 x 2 | | | | | | | |
| ENGINE | | | | | | | | | |
| Model | | 4J1-TCC | | 4HK1-TCN | | | | | |
| Type | | | | 4-Cylinder InLine, 4 Cycle, Water-Cooled | | | | | |
| | | DOHC, VGS Turbo with Intercooler | | OHC, VGS Turbo with Intercooler | | | | | |
| Displacement | | cc | | 2,999 | | 5,193 | | | |
| Maximum Output (Gross) | | kW (PS) @ rpm | | 91 (125) @ 2,600 | | 114 (155) @ 2,600 | | | |
| Maximum Torque | | Nm (kgfm) @ rpm | | 354 @ 1,500 | | 419 @ 1,600 | | | |
| Emission Level | | | | Euro 4 | | | | | |
| Fuel System | | | | Commonrail Direct Injection | | | | | |
| TRANSMISSION | | | | | | | | | |
| Model / No. of Speed | | | | MYV-6S | | | | | |
| Gear Ratio | | | | Manual 6-Speed | | | | | |
| | | | | 5.979 | | | | | |
| | | 1st | | 3.434 | | | | | |
| | | 2nd | | 1.862 | | | | | |
| | | 3rd | | 1.297 | | | | | |
| | | 4th | | 1.000 | | | | | |
| | | 5th | | 0.759 | | | | | |
| | | 6th | | 5.701 | | | | | |
| | | Reverse | | 5.701 | | | | | |
| | | Final | | 5.571 | | 4.556 | | 5.125 | |
| WEIGHT & CAPACITIES | | | | | | | | | |
| Gross Vehicle Weight | | kg | | 7,500 | | | | 8,500 | |
| Curb Weight | | kg | | 2,530 | | 2,615 | | 2,620 | |
| Front | | kg | | 1,600 | | 1,765 | | 1,755 | |
| Rear | | kg | | 930 | | 850 | | 865 | |
| Fuel Tank Capacity | | l | | | | 100 | | | |
| AXLE | | | | | | | | | |
| Front | | Type | | | | Reverse Elliot, I-Beam | | | |
| Front Axle Capacity (Design) | | kg | | 3,100 | | | | 3,300 | |
| Rear | | Type | | | | Banjo, Full Floating | | | |
| Rear Axle Capacity (Design) | | kg | | 5,000 | | 6,600 | | | |
| SUSPENSION SYSTEM | | | | | | | | | |
| Suspension | | Front | | | | Semi Elliptical Alloy Steel Leaf Spring with | | | |
| | | Rear | | | | Double Acting Telescopic Shock Absorber | | | |
| TYRES & WHEELS | | | | | | | | | |
| Tyres | | | | | | 215/75R17.5 | | | |
| Wheels | | | | | | 17.5x6.00-127 | | | |
| BRAKES | | | | | | | | | |
| Service | | Type | | | | Drum Brakes with Dual Circuit Hydraulic Control | | | |
| | | | | | | Hydraulic Pressure Assistance and Anti-Lock Brake System (ABS) with Electronic Brake Force Distribution (EBD) | | | |
| Parking Brake Type | | | | | | Transmission Mounted, Mechanical Operated Internal Expanding | | | |
| Auxiliary | | | | | | Exhaust Brake | | | |
| STEERING | | | | | | | | | |
| Steering System | | | | | | Power Assist, Recirculating Ball Type | | | |
| Min. Turning Radius | | m | | 7.2 | | 6.4 | | 7.1 | |
| ELECTRICAL | | | | | | | | | |
| Battery | | | | | | 80D26L x 2 | | | |
| Alternator | | | | | | 24V-90A | | | |
| OTHER SAFETY | | | | | | | | | |
| Safety | | | | | | Supplemental Restraint System (SRS) with Pre-Tensioner Seatbelt | | | |
| | | | | | | Anti-Slip Regulator (ASR) with On/Off Function | | | |
| | | | | | | Cab Tilt Warning | | | |
| Security | | | | | | Central Locking with Remote Keyless Entry & Immobiliser | | | |
| DIMENSION | | | | | | | | | |
| Overall Length | | mm | | 6,635 | | 5,985 | | 6,635 | |
| Overall Width | | mm | | | | 2,115 | | | |
| Overall Height | | mm | | 2,272 | | 2,244 | | 2,254 | |
| Wheelbase | | mm | | 3,815 | | 3,365 | | 3,815 | |
| Front Overhang | | mm | | | | 1,110 | | | |
| Rear Overhang | | mm | | 1,710 | | 1,510 | | 1,710 | |
| Front Tread | | mm | | | | 1,680 | | | |
| Rear Tread | | mm | | | | 1,650 | | | |
| Cab to Axle Center | | mm | | 3,242 | | 2,792 | | 3,242 | |

ISUZU


ISUZU MALAYSIA SDN BHD 200401026438 (664946-H)

501D, LEVEL 5, TOWER D, UPTOWN 5, NO.5, JALAN SS21/39,
DAMANSARA UPTOWN, 47400 PETALING JAYA, SELANGOR DARUL EHSAN.

GENERAL LINE: 03-7723 9777 FAX: 03-7723 9779

HOTLINE: 1-300-88-1133 www.isuzu.net.my

 IsuzuTrucksMalaysia

 IsuzuTrucksMalaysia

 www.isuzu.net.my

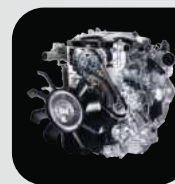
ISUZU SERVICE CENTRE SDN BHD 201601034731 (1205672-X)

LOT 730, JALAN SG. RASAU, SECTION 16,
40200 SHAH ALAM, SELANGOR DARUL EHSAN.

PHONE: 03-5513 0518

FAX: 03-5512 7550

TESTED AND PROVEN POWERTRAIN



NPR PRO

4JJ1-TCC

Displacement: 2,999cc

Max. Output (Gross): 91kW (125ps) @ 2,600rpm

Max. Torque: 354Nm @ 1,500rpm

125PS
Max Power

354Nm
Flat Torque



NPR 155 / NQR 155

4HK1-TCN

Displacement: 5,193cc

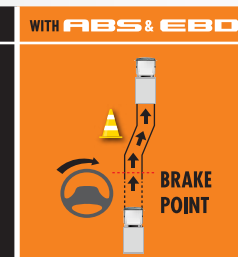
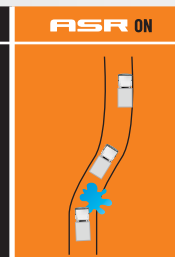
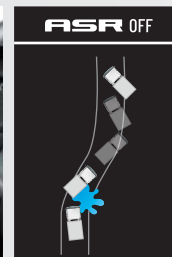
Max. Output (Gross): 114kW (155ps) @ 2,600rpm

Max. Torque: 419Nm @ 1,600rpm

155PS
Max Power

419Nm
Flat Torque

CLASS-LEADING SAFETY AND LONG TERM COST SAVINGS



ASR traction control helps prevent wheelspins and improves vehicle stability when driving on slippery roads.

EBD is a function that uses the ABS to distribute braking force between the front and rear wheels to compensate for changes in the load conditions or any shift of load due to acceleration/deceleration, thus preventing premature locking of the rear wheels.

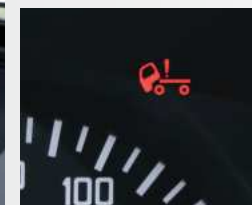


*SRS airbag system and seat belt with pretensioner are activated in the event of a frontal collision, mitigating impact to the head and chest.

*Applicable for driver only.



Brand New Feature - USB Port



Cabin Tilt Warning & Buzzer for driver safety warning



LED Headlight to provide better visibility

Dealer's information

ISUZU
GENUINE PARTS

ISUZU
BEST VALUE PARTS